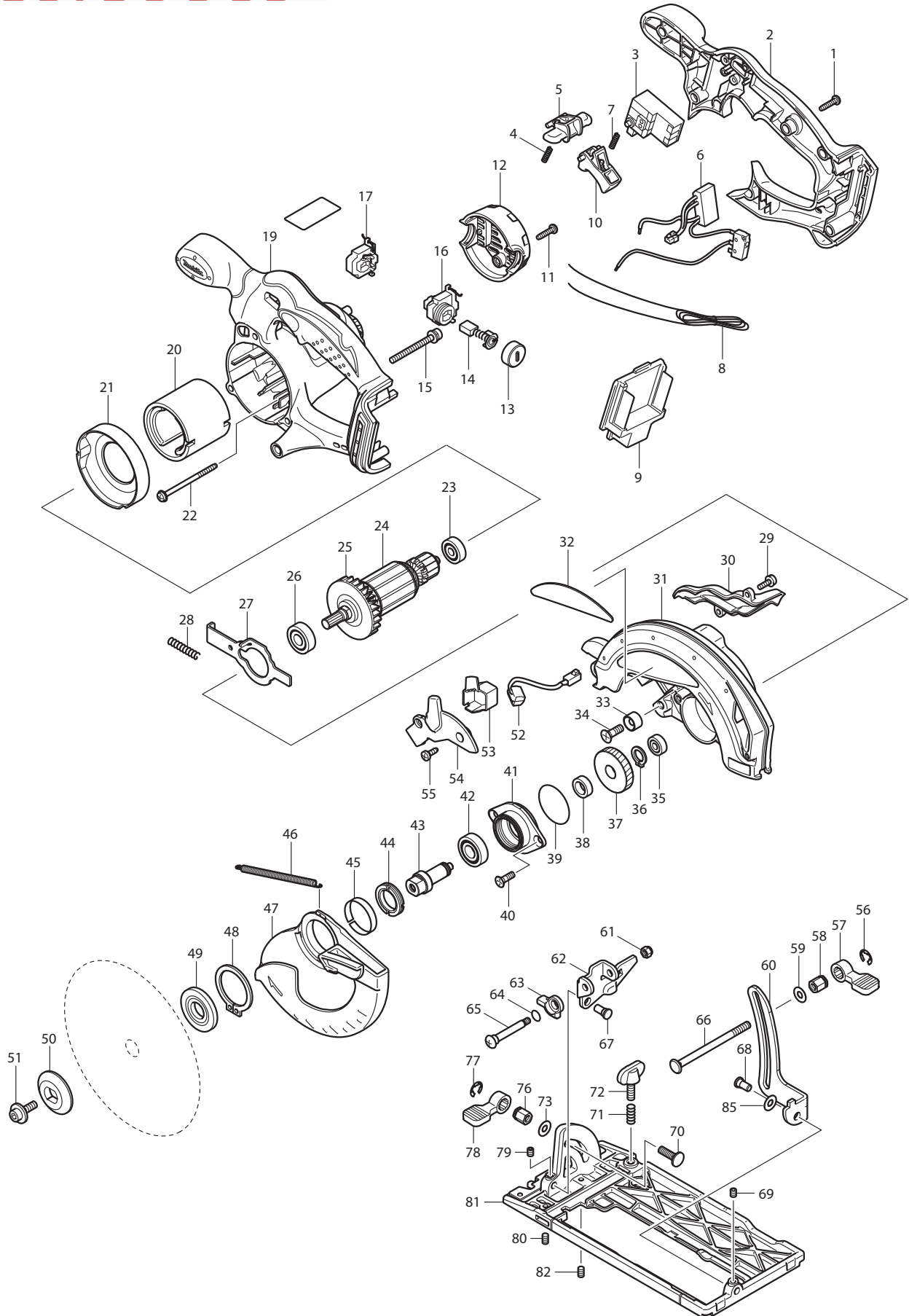




09 - 2011  
BSS610 / BSS610Z / BSS610X2 / BSS610F  
18V 6-1/2" CIRCULAR SAW



Item No	Type	Ref	Part No	Description	Qty	Unit
001			265995-6	TAPPING SCREW 4X18	6	PC.
002	1		419279-6	* HANDLE COVER	1	PC.
	2		141470-5	* HANDLE COVER COMPLETE	1	PC.
003	1		651956-6	* SWITCH TG72BD	1	PC.
	2		650631-1	* SWITCH	1	PC.
004			231469-9	COMPRESSION SPRING 4	1	PC.
005			419322-1	LOCK OFF LEVER	1	PC.
006	1		631695-4	* POWER SUPPLY CIRCUIT	1	PC.
	2		620088-0	* POWER SUPPLY CIRCUIT	1	PC.
007			231469-9	COMPRESSION SPRING 4	1	PC.
008	1		638432-7	* LEAD UNIT (TYPE 1 ONLY)	1	PC.
	1		643812-4	* TERMINAL, BLACK	1	PC.
	2		643838-6	* TERMINAL	1	PC.
	3		643859-8	* TERMINAL	1	PC.
	4		644808-8	* TERMINAL	1	PC.
010			419176-6	SWITCH LEVER	1	PC.
011			265995-6	TAPPING SCREW 4X18	2	PC.
012			419281-9	REAR COVER	1	PC.
013			643941-3	BRUSH HOLDER CAP	2	PC.
014	1		191976-3	CARBON BRUSH CB-432, 2PCS/SET - N/L/A	1	SET
	2		194435-6	CARBON BRUSH CB-441 2PC/SET (W/O ORIGIN) - N/L/A	1	SET
	3		195022-4	CARBON BRUSH CB-441, 2PCS/SET, W/ORIGIN	1	SET
015			911263-2	PAN HEAD SCREW M5X40	3	PC.
016	1		643814-0	* BRUSH HOLDER	1	PC.
	2		643895-4	* BRUSH HOLDER	1	PC.
017	1		643813-2	* BRUSH HOLDER	1	PC.
	2		643896-2	* BRUSH HOLDER	1	PC.
019	1		419278-8	* MOTOR HOUSING	1	PC.
	3		141559-9	* MOTOR HOUSING COMPLETE	1	PC.
020			638107-8	YOKE UNIT	1	PC.
021			419285-1	BAFFLE PLATE	1	PC.
022			266292-3	TAPPING SCREW 4X65	2	PC.
023			210023-2	BALL BEARING 627DDW	1	PC.
024			519173-3	ARMATURE ASS'Y 18V	1	PC.
		INC.		Item No. 23, 25, 26	1	PC.
025			241869-5	FAN 55	1	PC.
026			211061-7	BALL BEARING 6000LLB	1	PC.
027	1		345659-9	SHAFT LOCK 102MM	1	PC.
	2		346059-6	SHAFT LOCK 104MM	1	PC.
028			233092-6	COMPRESSION SPRING 5	1	PC.
029			911118-1	PAN HEAD SCREW M4X12	2	PC.
030			419284-3	BLOWER NOZZLE	1	PC.
		INC.	213434-0	O RING 26	1	PC.
		INC.	816847-0	OPERATIONAL INDICATION LABEL (OLD)	1	PC.
		INC.		Item No. 32	1	PC.
031			188045-9	BLADE CASE SET	1	PC.
032			819217-2	MAKITA LOGO PLATE	1	PC.
033			262049-0	RUBBER RING 6	1	PC.
034			251368-9	+ COUNTERSUNK SCREW M6	1	PC.
035			210028-2	BALL BEARING 606ZZ	1	PC.
036			961052-5	RETAINING RING S-12	1	PC.
037			227156-6	SPUR GEAR 52	1	PC.
038			257173-2	RING 12	1	PC.
039			213512-6	O RING 39	1	PC.
040			265034-2	+ COUNTERSUNK HEAD SCREW M5X16	2	PC.
041			318009-1	BEARING BOX	1	PC.
042			211131-2	BALL BEARING 6001DDW	1	PC.

Item No	Type	Ref	Part No	Description	Qty	Unit
043			324626-7	SPINDLE	1	PC.
044			285845-9	BEARING RETAINER 19-29	1	PC.
045			345469-4	THICKNESS RING	1	PC.
046			231821-1	TENSION SPRING 3	1	PC.
047			419280-1	SAFETY COVER	1	PC.
048			961152-1	RETAINING RING (EXT) S-34	1	PC.
049			224151-7	INNER FLANGE 40	1	PC.
050			224275-9	OUTER FLANGE 40	1	PC.
051			266133-3	HEX. SOCKET HEAD BOLT M6X20	1	PC.
052			631694-6	LED CIRCUIT	1	PC.
053			419341-7	CONNECTOR BOX	1	PC.
054			419282-7	LIGHT COVER	1	PC.
055			266026-4	TAPPING SCREW BIND CT 4X12	2	PC.
056			961014-3	STOP RING E-8	1	PC.
057			272229-0	LEVER 40	1	PC.
058			252158-3	HEX.NUT M6	1	PC.
059			941151-9	FLAT WASHER 6	1	PC.
060			345658-1	DEPTH GUIDE	1	PC.
061			252103-8	HEX. LOCK NUT M5-8	1	PC.
062			345657-3	ANGULAR GUIDE	1	PC.
063			317986-4	STOPPER	1	PC.
064			213062-1	O RING 9	1	PC.
065			265084-7	+ TRUSS HEAD SCREW M5	1	PC.
066			266194-3	FLAT HEAD SCREW M6X90	1	PC.
067	1		256442-8	SHOULDER PIN 6-7	1	PC.
	2		256480-0	SHOULDER PIN 6-7	1	PC.
068	1		256442-8	SHOULDER PIN 6-7	1	PC.
	2		256480-0	SHOULDER PIN 6-7	1	PC.
069			266264-8	HEX. SOCKET HEAD SCREW M5X6	1	PC.
070			251919-8	CAP SQUARE NECK BOLT M6X20	1	PC.
071			231007-7	COMPRESSION SPRING 6	1	PC.
072			251896-4	SCREW M5X20	1	PC.
073			941151-9	FLAT WASHER 6	1	PC.
076			252133-9	HEX. NUT M6	1	PC.
077			961014-3	STOP RING E-8	1	PC.
078			272251-7	LEVER 30	1	PC.
079			266264-8	HEX. SOCKET HEAD SCREW M5X6	1	PC.
080			266229-0	HEX. SOCKET SET SCREW M5X8	1	PC.
		INC.	816850-1	SCALE PLATE	1	PC.
081			154831-0	BASE COMPLETE	1	PC.
082			266229-0	HEX. SOCKET SET SCREW M5X8	1	PC.
085			253186-1	FLAT WASHER 7 (ADDED)	1	PC.
D01			654509-0	CONNECTOR 2-SD	2	PC.
E01			620258-1	CONTROLLER	1	PC.
<b>ACCESSORIES</b>				<b>- See Catalogue or visit <a href="http://www.makita.ca">www.makita.ca</a> for more accessories information -</b>		
A01			164095-8	GUIDE RULE	1	PC.
A02			DC18SD	CHARGER DC18SD	1	PC.
			DC18SE	AUTOMOTIVE CHARGER DC18SE	1	PC.
			DC18RAKIT	CHARGER + BATTERY (DC18RA+BL1830)	1	SET
			DC24SC	CHARGER F/ 7.2-24V, 1.3-3.3AH BATTERY	1	PC.
	1		DC18RA	CHARGER DC18RA	1	PC.
	2		DC18RC	CHARGER DC18RC	1	PC.
			DC18SC	CHARGER DC18SC - N/L/A	1	PC.
A03			194230-4	18V LI-ION BATTERY BL1830 (3.0AH), 2/PK	1	SET
			194288-3	18V LI-ION BATTERY BL1830 (3.0AH), 10/PK	1	SET
			194205-3	18V LI-ION BATTERY BL1830	2	PC.

Item No	Type	Ref	Part No	Description	Qty	Unit
A04			783203-8	HEX. WRENCH 5	1	PC.
A05	1		824757-7	PLASTIC CARRYING CASE	1	PC.
		INC.	163455-1	LATCH	2	PC.
		INC.	419360-3	HANDLE	1	PC.
	2		141353-9	PLASTIC CARRYING CASE	1	PC.
		INC.	163455-1	LATCH	2	PC.
		INC.	419360-3	HANDLE	1	PC.
A06			A-85092	6-1/2" C.T.SAW BLADE 24T (5/8")	1	PC.
A07			419283-5	DUST NOZZLE - Use Sales # P-80012	1	PC.
			P-80012	DUST NOZZLE	1	PC.
A08			194649-7	BATTERY PROTECTOR (F/BL1430, BL1830)	1	PC.
A09			450128-8	BATTERY COVER (F/LI-ION)	1	PC.

**SERVICE CHANGES****1. Changes on Switch, Terminal and Housing Set (Battery Protection Circuit)**

(T/I#84907, 75667)

(T/I# 93377)

(T/I#A0105)

Item No.	Description	Type 1	Type 2	Type 3	Type 4
17	Brush Holder		643812-2		643896-2
16	Brush Holder		643814-0		643895-4
3	Switch		651956-6		650631-1
6	Power supply circuit		631695-4		620088-0
8	Lead Unit		638432-7		-----
9	Terminal	643812-4	643838-6	643859-8	644808-8
2	Handle Cover		419279-6		141470-5
19	Motor Housing Complete	419278-8	158074-6 (N/A)		141559-9
E01	Controller	---	---		620265-4

Above parts are completely interchangeable as a set.

(T/I# A0830)

**Service Note:**

- Use **TYPE 3** for repair of the model manufactured on or after December 2011 with using **Yellow lead wire between Switch and Terminal.**
- Use **TYPE 2** (or **TYPE 1**) for repair of the model manufactured before December 2011 without using Yellow lead wire between Switch and Terminal.

**\*\* See Technical Information #93377 for Wiring Diagram Change**